



MEADOWS  
RETREAT  
LODGE PARK



Discover Your Home-from-Home at Meadows Retreat



3.  
5.  
7.  
9.  
11.

# Welcome to Meadows Retreat Lodge Park

Escape to the serenity of the Lake District and embrace unmatched luxury at Meadows Retreat Lodge Park.

With our stunning lodges, you can relax all year round with your very own home away from home.



## LOCATION

We are conveniently situated just off the A595 at Moota, in the Northern Lake District National Park.

From the cosiness of your lodge you can experience the stunning beauty of Skiddaw and in the other direction watch the sun set over the Solway.

## FACILITIES

Each lodge has parking for at least two vehicles and all properties have piped gas, electricity and water supplies and broadband is available.

Next door to the park is Moota Garden Centre with a stylish cafe/restaurant, which is open daily.



## Why Choose Meadows Retreat?

- Excellent Location
  - Our park overlooks the stunning backdrop of the Lake District.
- No Subletting Charges
  - Rent your holiday home without any additional charge at an excellent ROI.
- Open 12 Months a Year
  - You can come and go as you please with no restrictions.
- No Sites Fees Until 2025
  - When you buy you don't have to worry about site fees until next year.
- No Age Limits on Holiday Homes
  - As long as it looks tidy, you can stay as long as you like.
- All Animals are Welcome
  - Bring your furry friends along, they are more than welcome.
- Good Transport Links
  - Wherever you want to be in the Lakes, we have easy access to the North and South.
- Finance Available - Often No Deposit Required
  - If you haven't quite got the funds available, there are plenty of options



Finance Packages



Lake District Location



Pet Friendly





# Exploring Beyond Meadows Retreat Lodge Park



## COCKERMOUTH

Discover the charming market town that serves as the perfect introduction to the captivating Western Lake District. Celebrated as the birthplace of the esteemed poet William Wordsworth, this town is steeped in cultural history and offers visitors an intimate glimpse into the poet's early life. Explore the exquisite Georgian house where Wordsworth was born, now preserved by the National Trust, and immerse yourself in the rich literary heritage that defines this area.



## KESWICK

Nestled between the majestic Skiddaw mountain and the serene Derwentwater, Keswick stands as a vibrant hub of activity, promising a diverse array of experiences for all who visit. This picturesque market town is a haven for all kinds, showcasing a mix of attractions designed to cater to every interest. From a plethora of shopping options, museums, dining and activity centres such as climbing walls or theatres, there is plenty to keep busy with.



## THE SOLWAY COAST

Stretching from Burgh by Sands in the north to Maryport in the south, this designated "Area of Outstanding Natural Beauty" is a true hidden gem, brimming with history, nature and incredible views. Central to the AONB is the very pretty Victorian seaside town of Silloth with its wide tree-lined cobbled streets and large village green.



## WHITEHAVEN

With so many beauty spots, picturesque places and an exciting history the Georgian harbour town of Whitehaven is truly unique. The harbourside dates back to the 16th century and has seen major regeneration in the past 20 years with shops, bars and a fascinating museum. If you are feeling energetic Whitehaven is also the starting point of the popular 140 mile long C2C Cycle Route.





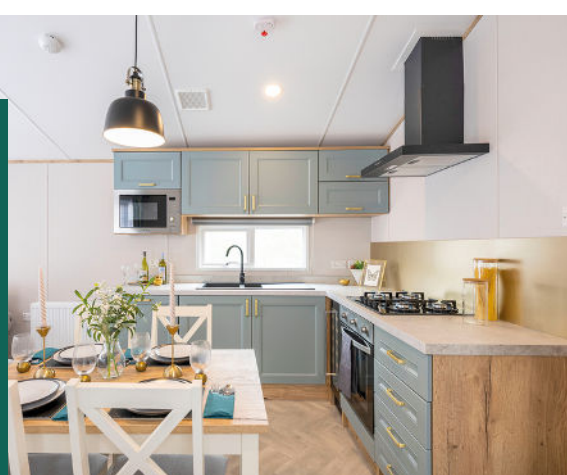
# Bespoke Luxury Lodges



## HOW MUCH CAN YOU EXPECT TO PAY FOR A LUXURY LODGE?

The Lake District is a sought after location when it comes to holiday homes. What many people don't know is, that it's often more affordable, than you think, to buy your own.

Our luxury lodges start at **£60,000**, complete with wrap around decking and parking sizable enough for two, sometimes three vehicles!



Step into unparalleled luxury with our lodges, crafted to perfection with the highest standards and residential specifications. Tailor-made options are available to fulfil your dream lodge desires.

For those eager to move into their new retreat, our turnkey solution transforms your lodge into a ready-to-live masterpiece - just unlock the door and step into your new chapter, available for a nominal extra charge.

While our prices may be modest for the area, they in no way detract from the opulent quality and allure that is the signature of our properties.

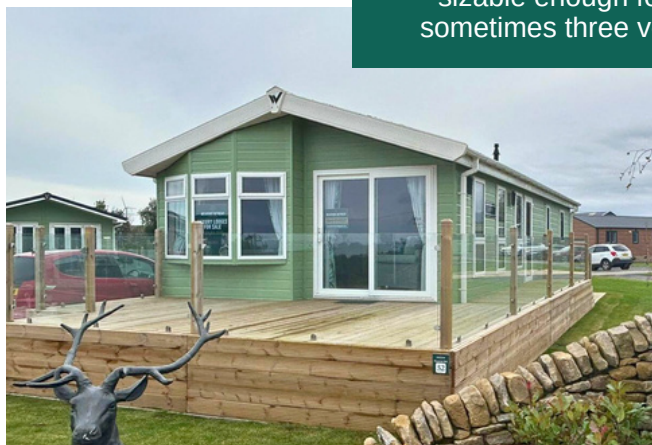
## WHAT ABOUT THE SITE FEES AND RUNNING COSTS?

All park homes have their unique costs, it will all depend on usage. Of course the more you use it, the more utilities will be.

Our holiday homes are provided with electrical and gas connections which is billed per quarter. Which means no worry about swapping gas bottles or running out

Our site fees, are due yearly and are **ONLY £3250**. But the good news is; when you buy your holiday home in 2024, you don't have to worry about site fees until 2025.

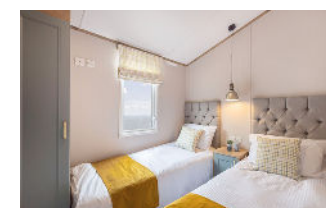
They also include water rates, leaving one less worry.



## WORRIED ABOUT YOUR BUDGET?

Whether you're waiting for funds to free themselves, or wish to treat yourself with a more luxury model, we can help at Meadows Retreat.

Unlock your perfect holiday home with flexible financing, including options available, for qualified buyers, without any deposit.



01697322359



meadows@hoey parks.co.uk



www.meadowsretreatlodgepark.com



MEADOWS RETREAT  
LEGGY PARK  
**FOR SALE**  
For more details please  
ask at reception  
[meadowsretreatlodgepark.com](http://meadowsretreatlodgepark.com)



# Life at Meadows Retreat as an Owner

## UNMATCHED SECURITY AND PEACE OF MIND

Your peace of mind is our top priority. Meadows Retreat Park assures 24-hour security, with a dedicated warden on-site and camera coverage throughout the park. This vigilant security setup ensures that whether you're here or away, your property and privacy are safeguarded around the clock.



## TURN YOUR LODGE INTO AN INCOME

When you're not basking in the tranquility of your holiday home, why not rent it out? We take no charges if you choose to sublet, which means every penny you make is yours. Supplement your retirement funds or help provide a better life for your family, with internet connections available and residential specs, your holiday homes makes the ideal holiday rental.



## UNLIMITED ACCESS ALL YEAR ROUND

We understand that the longing for a peaceful escape doesn't wait for the right season. That's why we are open all year round, providing you freedom to come and go as you please. Your lodge is your haven every season, be it a spontaneous summer getaway, a serene autumn retreat, or a cosy winter hideaway.





## MAP KEY

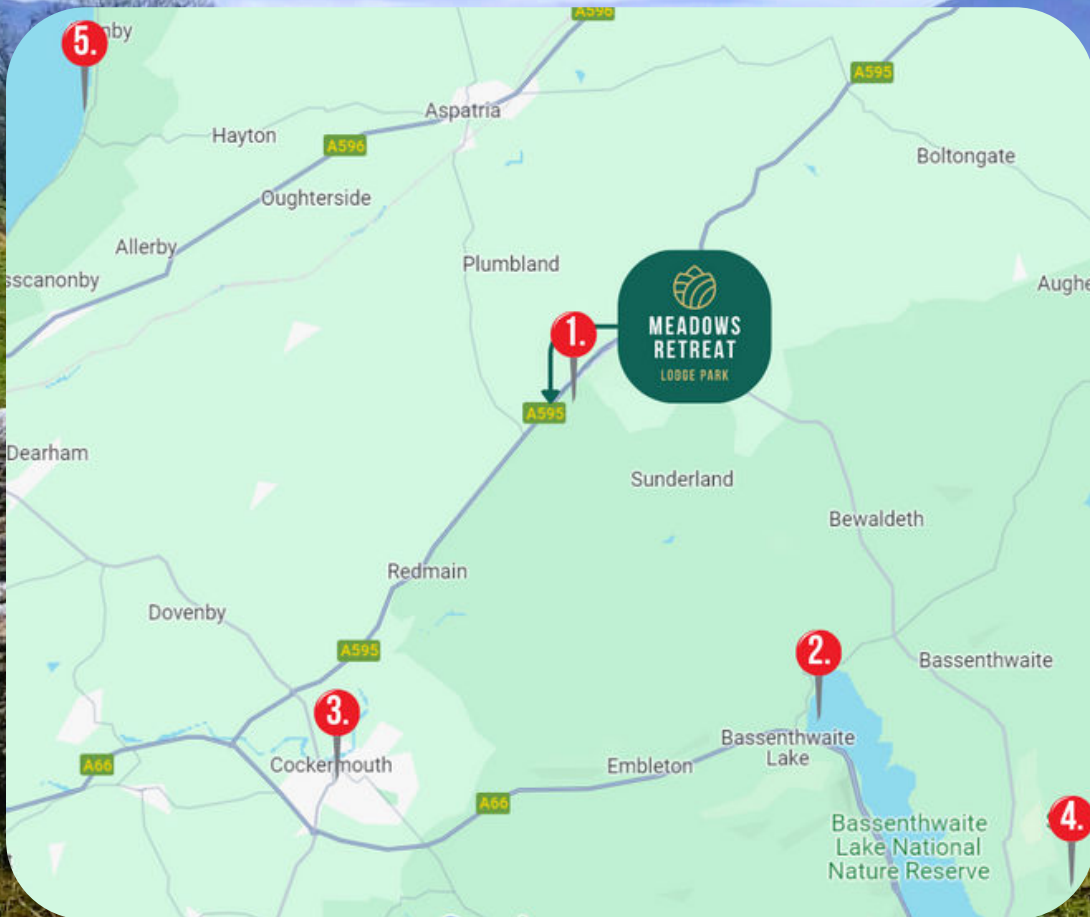




Atlas  
Topaz Super  
3 1/2 BEDROOMS

53

# It's All About Location



- 1. MOOTA GARDEN CENTRE**  
A 5 minute walk from our park
- 2. BASSENTHWAITE LAKE**  
A 15 minute drive from our park
- 3. COCKERMOUTH**  
A 10 minute drive from our park
- 4. SKIDDAW MOUNTAIN**  
A 25 minute drive from our park
- 5. ALLONBY BEACHES**  
A 20 minute drive from our park



01697322359



[meadows@hoeyparcs.co.uk](mailto:meadows@hoeyparcs.co.uk)

## FIND US AT:

Meadows Retreat Lodge Park,  
Moota, Cockermouth, CA13 0FF